

---

# SafeAnchor.Net

## Operational Manual

Deniz Barkin Takmaz - Version 1.7

---



**More powerful ways to secure your anchorage**

---

# Introduction

SafeAnchor.Net is a mobile application for iPhone and iPad devices detects anchor drag. Developments in mobile device's GPS chips enables most advanced anchor drag monitoring system can be easily adapted for the mobile devices.

Mobile application tracks boat's movements in free swing zone if boat begins to drag, active monitoring system fires anchor alarm notification with alarm sound.

## Exclusive Features

- **Anchor Remote** - Keep track of the boat movements on anchorage real-time and remotely. Anchor remote works across IOS devices installed SafeAnchor.Net application. Both device needs to be connected to Internet service.
- **Offline Mode** - Internet connection is not required to work. Boat movements can be tracked on radar screen of the application even if you don't have an internet connection.
- **Background Mode** - Mobile application works on background and keep receiving GPS location signals while application is in background mode. If drag is detected, it send notification with sound to notify user.
- **Set Anchor Location Manually** - User can easily set an anchor location manually on the screen with respect to current location or move to another anchor point any time.
- **Power consumption** - Power consumption of the application can be managed by setting page with user preferences.
- **Locations Catalog** - Anchor locations are saved to local database and shown on map.

Secures your anchorage.

anchor drag detection application

SafeAnchor.Net



# User Interface

## Anchor Alarm

- Activate Alarm

## Anchor Operations

- Set Anchor Location
- Release Anchor
- Anchor Remote
- Store
- Settings

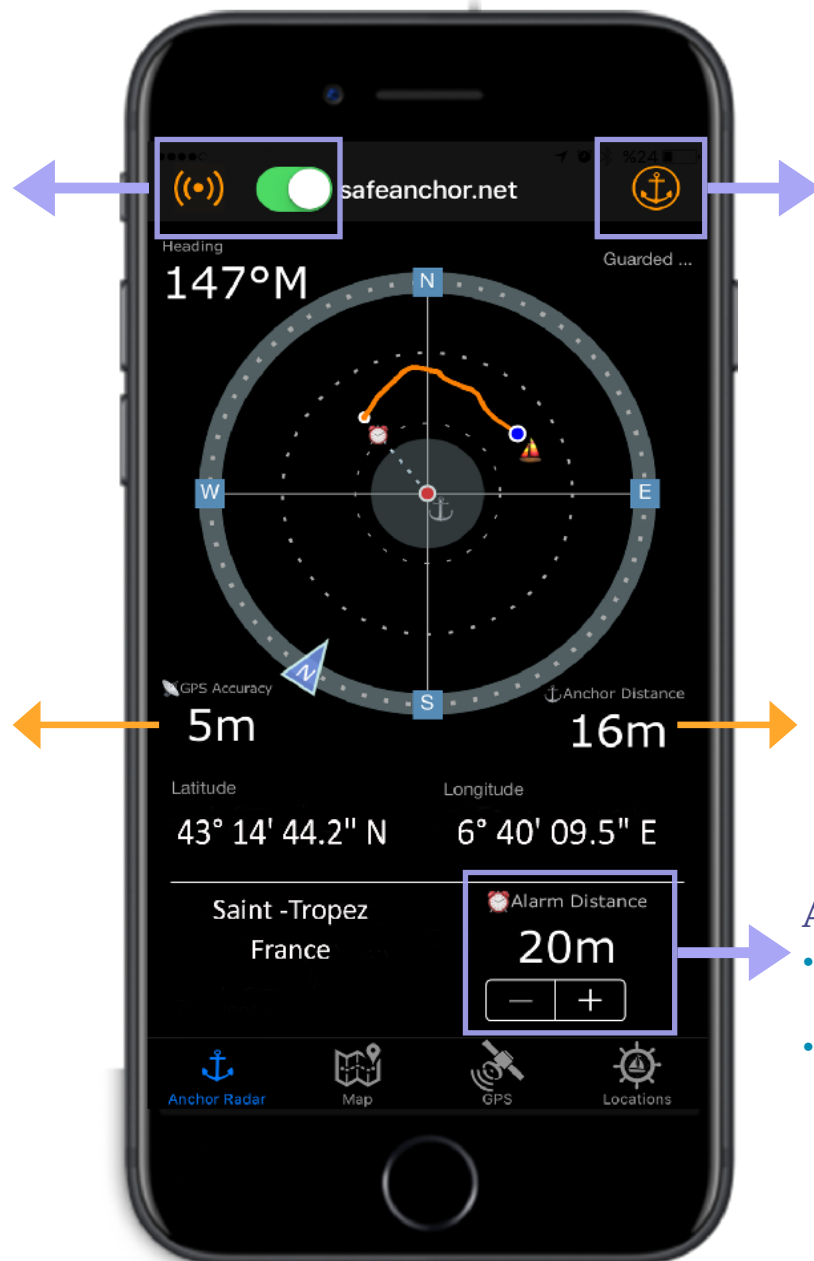
## GPS Accuracy

**Red** indicates poor GPS signal. Wait

Distance from current location to Anchor point.

## Alarm Radius

- Set the radius of boat swing zone.
- Allow sufficient space for boat to swing as the wind or tide changes direction.



---

# How it works?

## 1. Set Anchor Location

Anchor location can be set by manually or using current GPS location as an anchor point. Application use this location as an center point of circular free swing zone. If boat leaves the zone, application fires alarm notification.

Distance from current location to anchor point is plotted on the radar screen with dotted line allow users to monitor anchor bearing.

### Anchor Operations :

- **Anchor the boat to current location** - Use current GPS location as an anchor point. GPS signal must be good in order to set the location. If GPS Accuracy indicates Red, application waits to have better signal.
- **Set Anchor Location Manually** - Set anchor location manually with using the map or move anchor point to another location easily.
- **Set Anchor from last point** - Last Anchor point saved in memory is used as current anchor location. It is very useful feature if you set location and closed the application. When re-enter the app, you can recall last location from memory to set anchor location and activate the alarm.

## 2. Activate Alarm

Activation of alarm can be done using anchor alarm menu and green alarm switch toggled to green on the upper left of the application screen. Toggled on / off any time by user.

Drag monitoring system optimized to track the location updates against the alarm distance defined by user.

After alarm toggled on, location updates continuously receive in background.

---

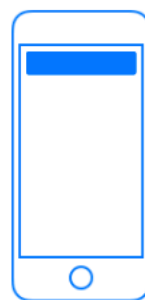
# Alarm Duration Setting

By default, alarm duration of lock screen is managed by Apple device settings and it is 6 sec. To increase duration to permanent, user needs to change notification type in device setting menu. Kindly follow the steps below:

1. Navigate to Device **Settings** Page
2. Find **Safe Anchor**
3. In Notifications Tab, change **Alert Display Type** to Persistent as shown below:

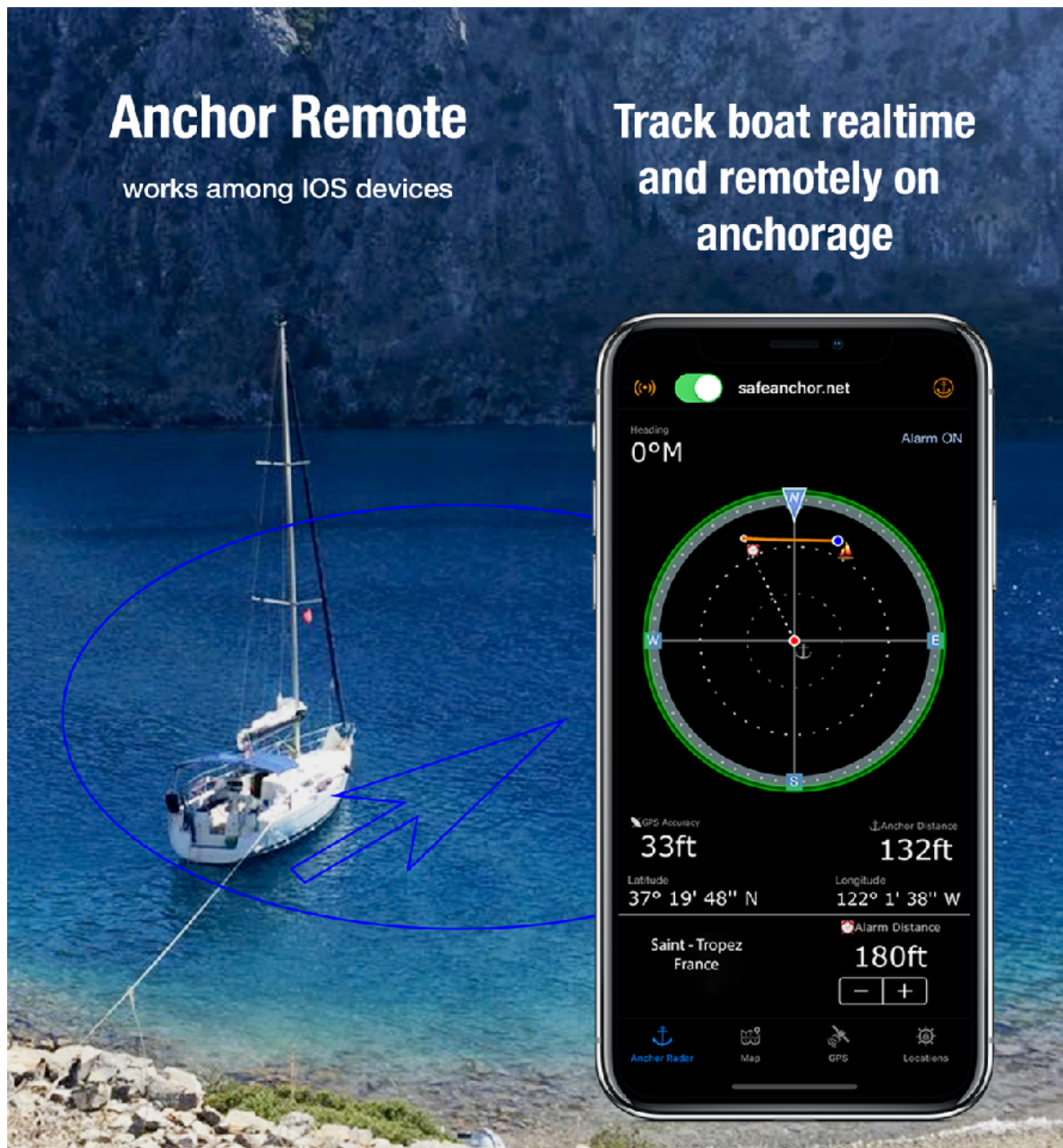


Temporary



Persistent

# Anchor Remote



Leave your iPad on the boat, keep track of your boat's movement real-time and remotely on anchorage with your iPhone.



---

### Anchor Remote Features :

- **Real-time Monitoring** - Keep track of the boat movements on anchorage real-time and remotely. Both device needs to be connected to Internet in order to exchange online data.
- **Remote Alarm Notifications** - Anchor alarm and notifications sends to remote device even if the application is not running or in background mode.
- **Manage Configuration Parameters Remotely** - Anchor Settings can be managed on remote device and these changes applied real-time on both device.

### Anchor Remote Requirements :

- Active Internet connection is required on both device to use remote feature.
- IOS devices.( iPad with LTE , iPhone)
- SafeAnchor.Net mobile application must be installed on both device.
- In-App service subscription. It can be restored all devices.

## Anchor Remote Operation

1. **Channel And Key Setting** - Uni
2. que Channel and Key pairs must be used for establish communication link between devices. Channel and Key pairs must be same on both device.
3. **Activate Anchor Remote**. This enables remote mode.
4. Set **Remote Mode** based on :
  - **Server Mode** ( The Boat ) : Device which you left on the boat must be configured as Server. Important Not: Only one Server Mode must be used for the Channel.
  - **Client Mode** ( Client Device ) : Device which receives location updates and remote notifications.
5. First set **Server Mode** and activate Anchor Alarm( Set Anchor Location and define alarm radius, then activate alarm). Server Mode indication will be appeared on the main screen.

---

6. Once Server Mode is ready. Repeat the first 3 step and set other device to **Client Mode**. You can close and re-open client mode application any time.

Client mode device receives remote notification and alarm even if the app is not running. It shows as notification on lock screen.

You can set and change Anchor alarm parameters on client device and updates automatically send server-mode device instantly such as changing alarm radius or disable anchor alarm.